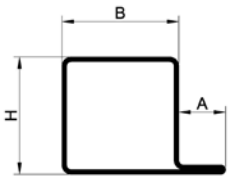


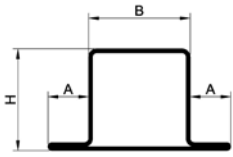
Anslagsprofiler

Anslagsprofiler findes i mange brancher for eksempel automotive, maskinkonstruktion, møbler, materialehåndtering og så videre. Profilerne er fremstillet af varmtvalset bejdset båndstål i kvalitet S235JRG2 i længde a 6000 mm +50/-0 mm. De fleste dimensioner kan også fremstilles som galvaniseret eller rustfri (W. 1.4301). Andre ønsker til materiale, overflade, længde og fixlængde kan også imødekommes.



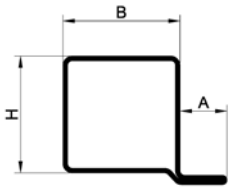
PRODUKT-ID	H	B	A	T
144	34	20	15	2,0
106	34	35	15	2,0
1191	34	50	15	2,0
104	34	55	15	2,0
1092	34	100	15	2,0
1114	40	20	15	2,0
1008	40	40	15	2,0
1049	40	60	15	2,0
1087	40	70	15	2,0
116	40	80	15	2,0
1692	40	20	20	2,0
1672	40	30	20	1,8

PRODUKT-ID	H	B	A	T
1683	40	40	20	2,0
1673	40	60	20	1,8
1679	40	70	20	2,0
197	50	20	20	2,0
1072	50	40	20	2,0
1810	50	50	20	2,0
1688	50	90	20	2,0
1647	60	20	20	2,0
1592	60	40	20	2,0
1645	60	50	20	2,0
1593	80	60	20	2,5



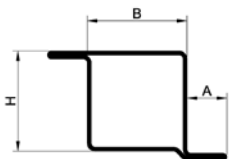
PRODUKT-ID	H	B	A	T
143	34	20	15	2,0
105	34	35	15	2,0
1050	34	40	15	2,0
103	34	50	15	2,0
150	34	55	15	2,0
1266	34	100	15	2,0
185	40	20	15	2,0
152	40	40	15	2,0
1693	40	20	20	2,0
1684	40	40	20	2,0

PRODUKT-ID	H	B	A	T
1690	40	70	20	2,0
193	50	20	20	2,0
1070	50	40	20	2,0
1811	50	50	20	2,0
1689	50	90	20	2,0
1596	60	40	20	2,0
1646	60	50	20	2,0
1597	80	60	20	2,5



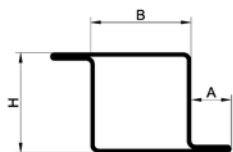
PRODUKT-ID	H	B	A	T
133	34	35	15	2,0
114	34	55	15	2,0
1640	40	40	20	2,0

PRODUKT-ID	H	B	A	T
1628	40	50	20	2,0
1613	40	40	17,5	2,0
1348	40	70	17,5	2,0



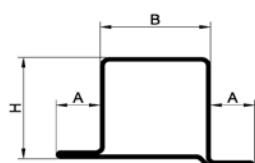
PRODUKT-ID	H	B	A	T
169	34	20	15	2,0
139	34	35	15	2,0
111	34	50	15	2,0
112	34	50	15	2,0
138	34	35	15	2,0
1163	40	20	15	2,0
1162	40	40	15	2,0

PRODUKT-ID	H	B	A	T
1685	40	40	20	2,0
1680	40	40	20	2,0
195	50	20	20	2,0
1071	50	40	20	2,0
1812	50	50	20	2,0
1594	60	40	20	2,0
1595	80	60	20	2,0



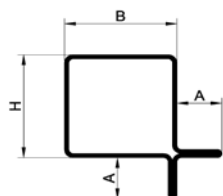
PRODUKT-ID	H	B	A	T
112	34	50	15	2,0
138	35	34	15	2,0
1680	40	40	20	2,0
1614	40	40	17,5	2,0

PRODUKT-ID	H	B	A	T
1094	40	70	17,5	2,0
1681	50	40	20	2,0
1601	60	40	20	2,0
1602	80	60	20	2,5

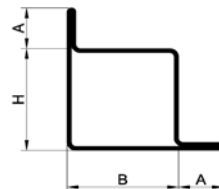


PRODUKT-ID	H	B	A	T
140	34	35	15	2,0
113	34	50	15	2,0
1639	40	40	20	2,0
1615	40	40	17,5	2,0

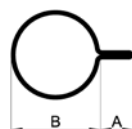
PRODUKT-ID	H	B	A	T
1093	40	70	17,5	2,0
1682	50	40	20	2,0
1598	60	40	20	2,0
1600	80	60	20	2,5



PRODUKT-ID	H	B	A	T
141	34	34	15	2,0



PRODUKT-ID	H	B	A	T
142	34	34	15	2,0



PRODUKT-ID	H	B	A	T
202	32	15	1,5	