

Gældende legeringstillæg April 2011- DKK/KG eller procent af NETTO-pris

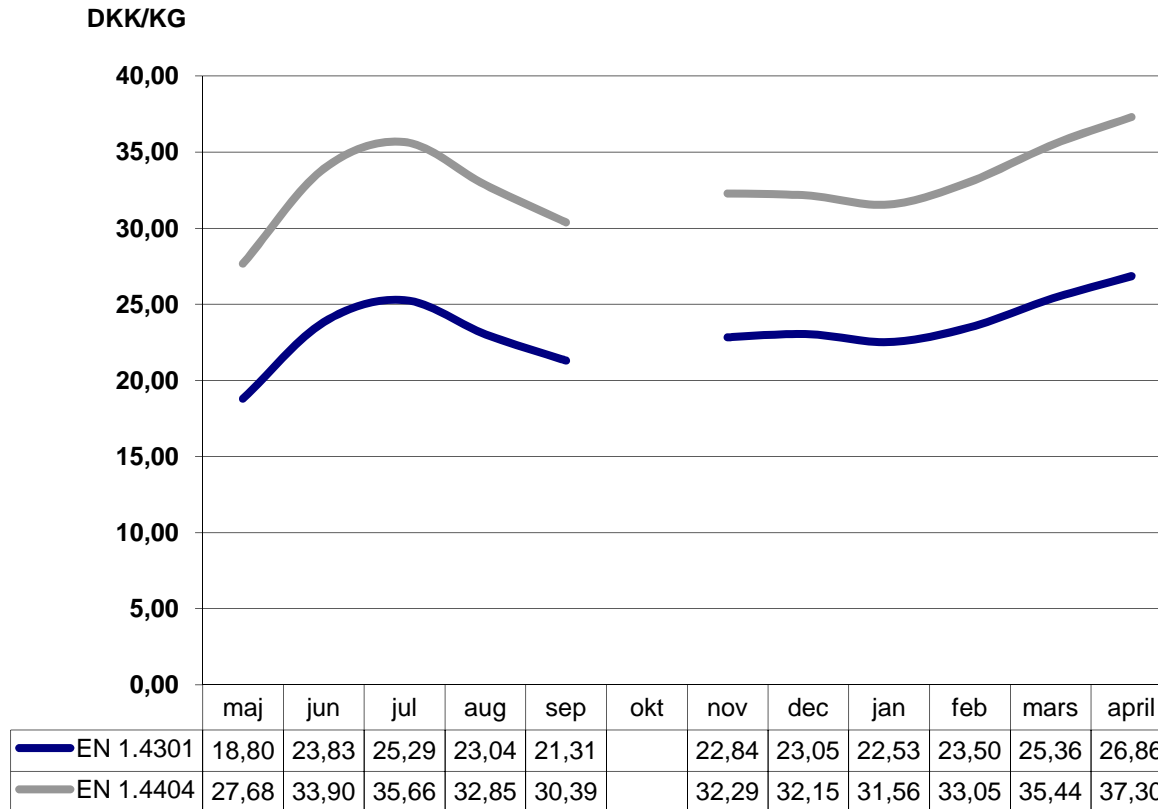


| Kvalitet | EN | 1.4301/07 | 1.4541 | 1.4432 | 1.4305 | 1.4401/04 | 1.4571 | 1.4306 | 1.4435 | 1.4512 | 1.4542 | 1.4439 | 1.4462 |
|-------------------------|------|-----------|--------|--------|--------|-----------|--------|--------|--------|--------|--------|--------|--------|
| | Aisi | 304/304L | 321 | | 303 | 316/316L | 316Ti | 304L | 316L | 409 | | | |
| Produkt | | 305/315 | 325 | 340 | 300 | 330/335 | 360 | 310 | 350 | 105 | 365 | 320 | 400 |
| 1100 Plade | | 14,55 | 16,34 | X | X | 22,38 | 22,38 | 16,26 | 25,44 | X | X | 42,82 | X |
| 1200 Stang slebet/tr | | 19,92 | 22,75 | 33,12 | 19,92 | 30,66 | 30,96 | 23,42 | 34,84 | X | 14,17 | X | 22,83 |
| 1300 Stang varmvalset | | 17,75 | 20,22 | 29,39 | 17,75 | 27,23 | 27,53 | 20,81 | 30,96 | X | X | X | 20,29 |
| 1400 Svejste rør | | 16,64 | 18,72 | 27,98 | X | 25,74 | 25,74 | 18,72 | 29,17 | 3,73 | X | 49,24 | 19,62 |
| 1500 Emnerør | | 24,17 | 27,01 | 38,20 | X | 33,57 | 33,57 | 24,17 | 38,20 | X | X | 63,86 | X |
| 1600 Plade rørdele *) | | 59% | 59% | 71% | X | 71% | 71% | 59% | 71% | X | X | X | X |
| 1700 Fittings *) | | 59% | 59% | 71% | X | 71% | 71% | 59% | 71% | X | X | X | X |
| 1800 Rustfri flanger *) | | 59% | 59% | 71% | X | 71% | 71% | 59% | 71% | X | X | X | X |
| 1900 Sømløse rør | | 26,86 | 26,86 | 42,45 | X | 37,30 | 37,30 | 26,86 | 42,45 | X | X | 70,94 | 27,68 |

Dkk/kg (hvis andet ikke er angivet)

*) Af nettopris

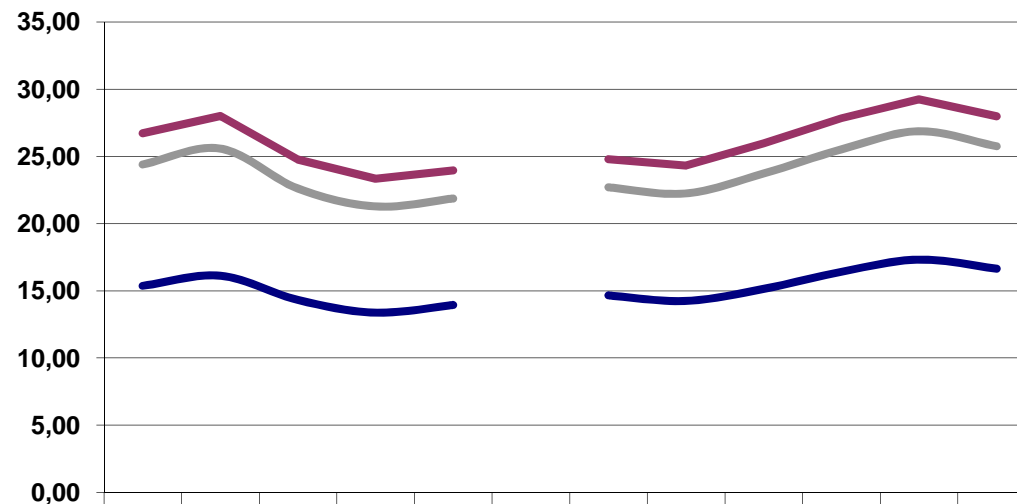
Legeringstillägg - utveckling sömlösa rör



Legeringstillägg - utveckling svetsade rör



SEK/KG



| | maj | juni | juli | aug | sep | okt | nov | dec | jan | feb | mars | april |
|--------------|-------|-------|-------|-------|-------|-----|-------|-------|-------|-------|-------|-------|
| EN 1.4301/07 | 15,37 | 16,12 | 14,32 | 13,38 | 13,95 | | 14,66 | 14,25 | 15,14 | 16,41 | 17,31 | 16,64 |
| EN 1.4404 | 24,39 | 25,57 | 22,60 | 21,26 | 21,86 | | 22,69 | 22,23 | 23,72 | 25,51 | 26,86 | 25,74 |
| EN 1.4432 | 26,71 | 28,00 | 24,77 | 23,34 | 23,95 | | 24,78 | 24,32 | 25,96 | 27,83 | 29,24 | 27,98 |